

**PLAN C1001d, Elevation #1:  
5 bedrooms, 4.5 bathrooms each unit**



**Left Side/Unit A:**  
 First Floor: 891 sq. feet  
 Second Floor: 1,546 sq. feet  
 Third Floor: 1,182 sq. feet  
 Total: 3,619 sq. feet  
 Front Porch: 53 sq. feet  
 Garage: 750 sq. feet

**Right Side/Unit B:**  
 First Floor: 806 sq. feet  
 Second Floor: 1,432 sq. feet  
 Third Floor: 1,082 sq. feet  
 Total: 3,320 sq. feet  
 Front Porch: 72 sq. feet  
 Garage: 767 sq. feet

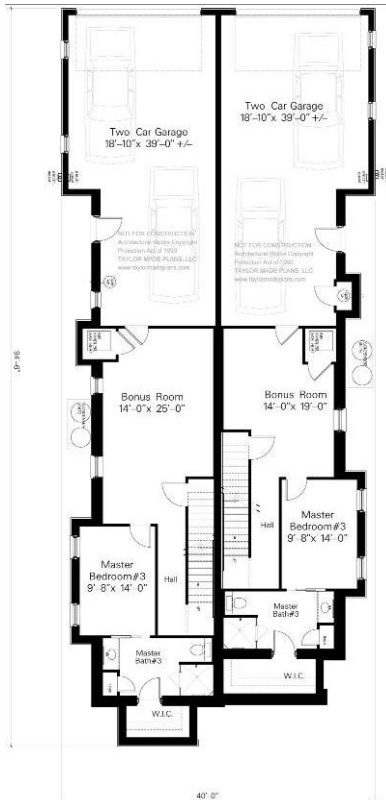
Total Width: 40'-0"  
 Total Depth: 94'-4"  
 First Floor Ceiling Height: 9'-0"  
 Second Floor Ceiling Height: 9'-0"  
 Third Floor Ceiling Height: 9'-0"  
 Roof Pitch: 7/12  
 Total Height: 40'-6" +/-

**Please visit our website  
for current pricing:**

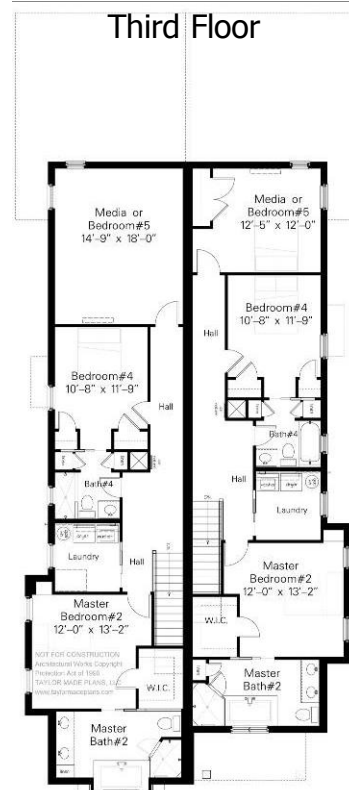
[www.taylormadeplans.com](http://www.taylormadeplans.com)

First Floor

Second Floor



Third Floor



All plans, photos, drawings and images are protected under copyright law. Any unauthorized use is strictly prohibited.

